



InternationalLight
TECHNOLOGIES

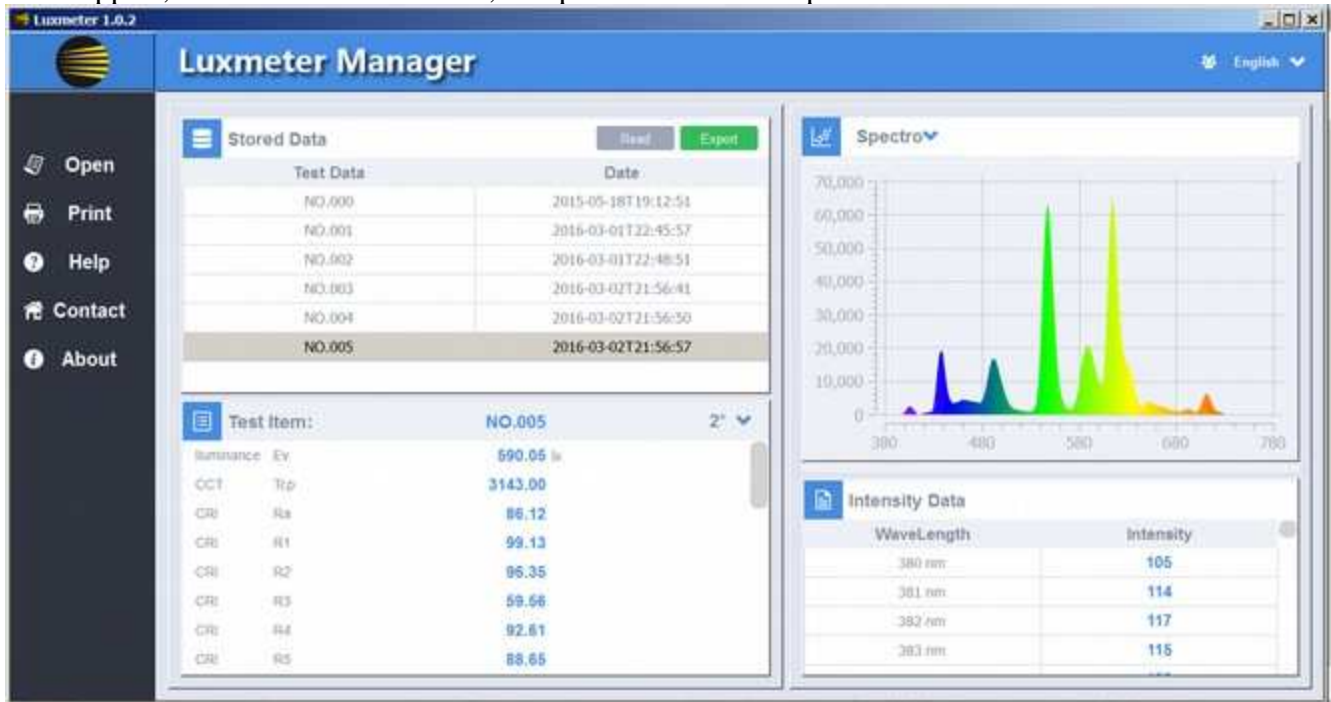
10 Technology Drive
Peabody, MA 01960
Ph: 978-818-6180
Fax: 978-818-6181
Web: www.intl-lighttech.com

**Luxmeter Manager Software Manual
for ILT350**

**Rev. 1.0.2
3/1/2016**

Thank you for purchasing your ILT350 from International Light Technologies. Included with your purchase is a complimentary copy of our Luxmeter Manager software rev 1.0.2 and complimentary software upgrades as needed, when they become available. Software downloads and manuals can be located on the ILT website: www.intl-lighttech.com Click on the support tab and select software or manuals as applicable.

The Luxmeter Manager Software (LMS) was designed to make extraction of the stored readings within the LT350 simple, intuitive and user friendly. LMS allows the customer to reach the ILT website for tech support, review the user manuals, and print customized reports.



1. INSTALLATION:

Once you have downloaded the software from the ILT website, Click on the ILT350_Setup.exe program to install the LMS software. Follow the on screen prompts to continue.

📁 ILT350 driver

📄 ILT350_Setup.exe

Most computers will not have the necessary driver installed to run the LMS software with the ILT350. To add the driver, open the ILT350 Driver folder from the download. Click on the driver set up for the correct windows version for the computer (Windows 32 bit or Window 64 bit)

📁 WIN32

📁 WIN64

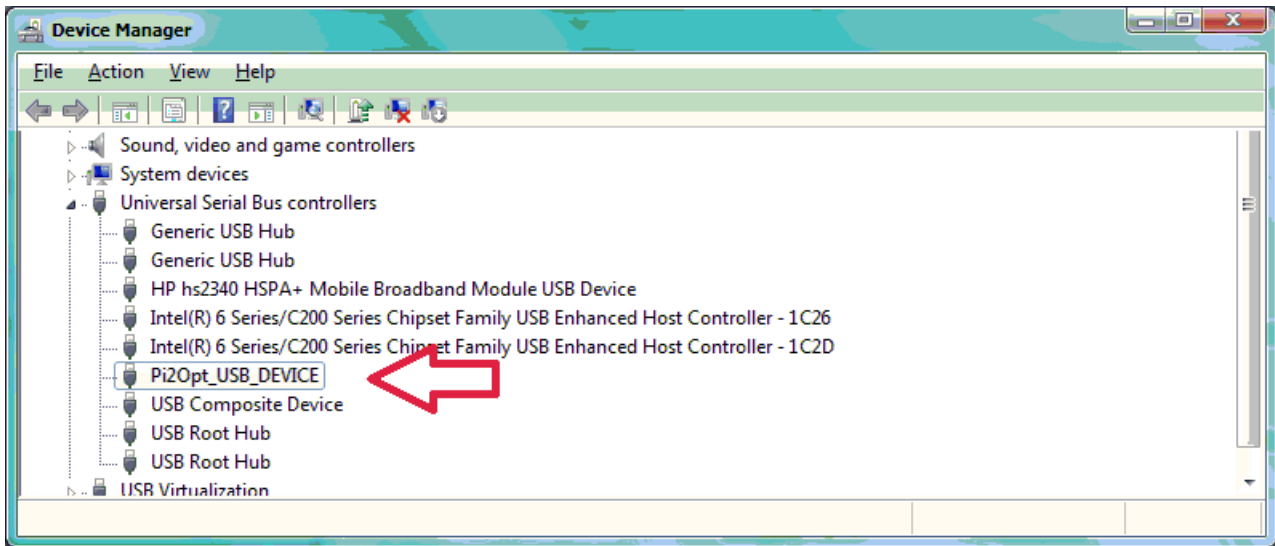
📄 DriverSetup_winusb32.exe

📄 DriverSetup_winusb64.exe

2. VERIFICATION:

Once the software and drivers are installed, connect the ILT350 to the computer using the ILT provided USB A to USB micro cable or any good quality data transfer USB cable. Turn on the meter and assure

the device is registered by the computer. The first time you connect a device it may take a moment for the computer to register the device and assign a com port. Verify your connection by opening Device Manager, scroll down to Universal Serial Bus controllers. Open the list and look for Pi2Opt_USB_Device. If you do not see you device, verify you are using a data transfer USB cable (some cables only allow charging) and that your device is turned on.



3. SET UP A SHORTCUT:

During installation the software will be saved in the ILT350 folder in the location: C:\Program Files (x86)\ILT350.

To create a shortcut on your desk top, right click on ILT350.exe, click Create shortcut.

To pin to the taskbar, right click on ILT350.exe, click Pin to Taskbar.



4. RUN LUXMETER MANAGER:

You can access the software in the ILT350 folder C:\Program Files (x86)\ILT350, by double clicking on the ILT350.exe program. If you created a short cut on your desk top or taskbar, you can also run the

software from you desktop.

Click on the Taskbar icon or double click the ILT350.exe or shortcut on your desktop.

If your meter is not turned on, (verify screen is illuminated) turn on your ILT350 meter. (Reminder, with auto shut off -On enabled the device will shut off in approx. 10 minutes)

5. DOWNLOADING STORED DATA FROM THE ILT350

With the software open and the meter on, Click the “Read” button. A message(currently in Chinese) window will pop up with an “OK” Box, Press OK.

Message 1. Failed to read data. In this case after you press OK, there will be no files in your window. This means that there were no saved files on the device, the meter is shut off, or there is a problem with connection.

Message 2. Data reading is complete. In this case after you press OK, the files saved in your meter will now be displayed in the Stored data window.

6. DATA DISPLAYS

There are four data display windows:

A. Stored Data: READ:When Read is pressed, the software will read all of the files from the connected device.

Test Data: Lists the file names as retrieved from the device, ie. M000 becomes NO.000.

Date: displays the date the files were originally created.

EXPORT: will export the selected(highlighted) file in csv format. To select a file use the up/down keys or use the mouse to click on the file/ row, then click export. A save window box will open.

Select the path and file name, then click on Save to export the file. When completed, the message succeeded in exporting data will appear.

B. Test Item:

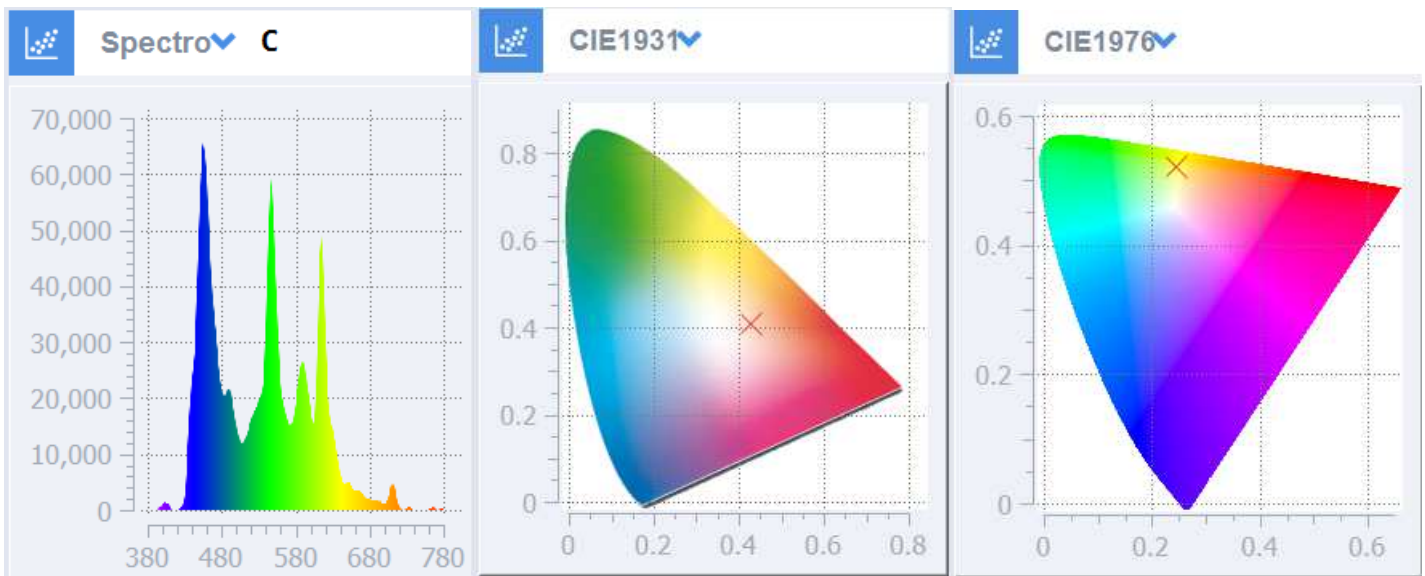
Test Item displays the results of all of the calculated values for the selected file. To the right of the selected files name is the observer. Click on the down arrow to toggle between 2^0 and 10^0 .

On the right is a scroll bar. Use the scroll bar to change the view to scroll between lux at the top and Chromatism at the bottom.

| Stored Data A | | Read | Export |
|---------------|---------------------|------|--------|
| Test Data | Date | | |
| NO.000 | 2015-05-18T19:12:51 | | |
| NO.001 | 2016-03-01T22:45:57 | | |
| NO.002 | 2016-03-01T22:48:51 | | |
| NO.003 | 2016-03-02T21:56:41 | | |
| NO.004 | 2016-03-02T21:56:50 | | |
| NO.005 | 2016-03-02T21:56:57 | | |

| Test Item: B | | NO.003 | OBSERVER |
|--------------|-----|--------|----------|
| CRI | R6 | 87.44 | 2° |
| CRI | R7 | 90.82 | |
| CRI | R8 | 82.30 | |
| CRI | R9 | 48.82 | |
| CRI | R10 | 79.62 | |
| CRI | R11 | 84.38 | |
| CRI | R12 | 60.73 | |
| CRI | R13 | 95.42 | |

C. Plots: the drop down menu allows the user to toggle between the three available plots: Spectro, CIE1931, CIE1976 as shown below:



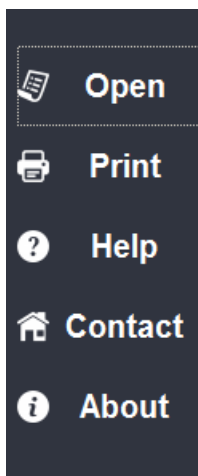
D. Intensity Data:

| WaveLength | Intensity |
|------------|-----------|
| 380 nm | 9 |
| 381 nm | 86 |
| 382 nm | 84 |
| 383 nm | 91 |

Relative intensity ranging from 1- 70,000 listed in 1 nm increments from 380 nm to 780 nm. The scroll bar on the right is used to move up and down to view different sections of the file.

7. MENU BAR:

The menu bar offers five features, Open, Print, Help, Contact and about



A. Open: Open will open a window to allow selection a saved .csv file on a computer or storage device other than the ILT350. Once selected the file will be read and will populate the fields in the same format as when the file is read from the internal device memory. The Stored data, Test Item, Plot and Intensity Data display boxes will all be populated.

B. Print: will open a report creation window to allow printing of the selected file into a full report.

Print Continued:

Company information for the report is entered into the top section including name, address and contact information. Measurement sample information for the report is entered into the middle section including Sample Name, Sample Model and Remarks.

Select Print to PDF or Paper in the bottom section using the drop down menu. Then click Print to print or Cancel to cancel.

C. Help: is used to access the manual

D. Contact: Links to the tech support link on the ILT website

E. About provides ILT Contact information

The screenshot shows a 'Print' dialog box with the following content:

- Company Information:**
 - Company Name: ILT
 - Country: usa
 - Phone: 978 818 6180
 - Fax: 978818 6181
 - Email: jfowler@intl-lighttech.com
- Sample Information:**
 - Sample Name: QTH lamp
 - Sample Model: LAB TEST
 - Sample Remarks: PRECAL SCAN
- Print Options:**
 - Print to PDF (dropdown menu)
 - Print (green button)
 - Cancel (red button)