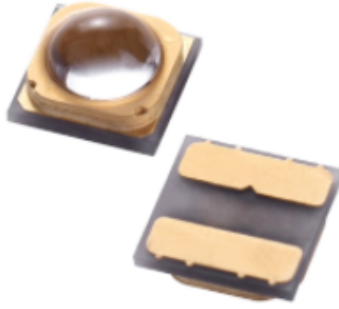
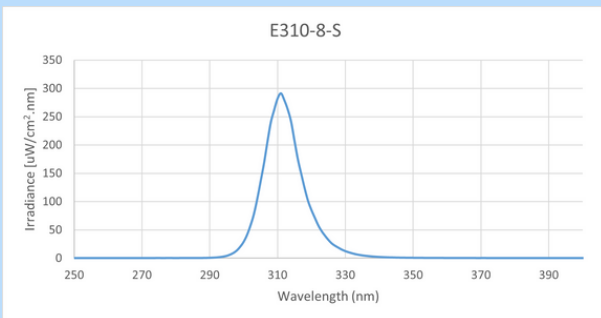


E310-8 UV-B LED



SPECIFICATIONS

- **Definition:** E310-8
- **Package:** Ceramic SMD3939
- **Peak Wavelength:** 310 nm
- **Radiant Flux:** 11 – 16 mW
- **Forward Voltage:** 5.0 - 8.0 V
- **Spectrum Half Width:** 10 nm
- **View Angle:** 60°
- **Rating:** IF=100mA
- **Life Hours:** 10,000

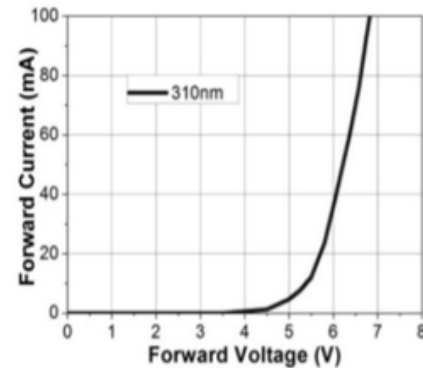
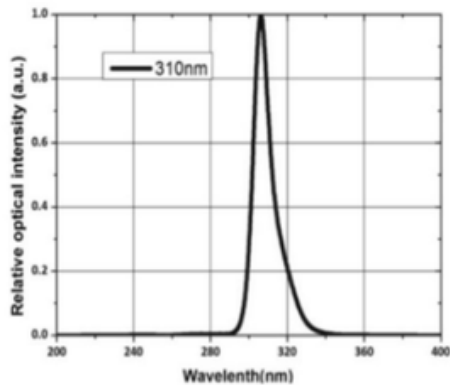
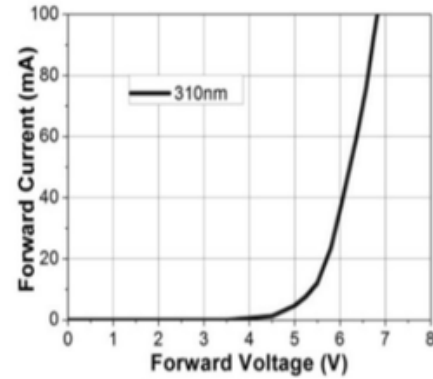
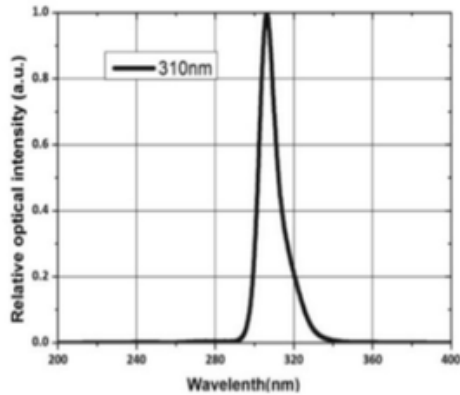


Distance [mm]	Irradiance [uW/cm ²]	Irradiance [mW/cm ²]
25	3978.25	3.97825
50	1192.48	1.19248
100	297.665	0.297665
200	74.1619	0.0741619
500	11.3013	0.0113013

NOTES FOR E310-8

1. Optical output power's measurement tolerance: ±10%
2. Voltage's measurement tolerance: ±0.1V
3. Dominant wavelength's measurement tolerance: ±1nm
4. Pulse Operation (1 KHZ; Duty Cycle: 5%); Maximum operating current: 100mA

Electrical Characteristics



INSTALLATION AND HANDLING

1. Do not touch the LED, contact will deposit oils that effect the normal operation/life.
2. Power: Reversing polarity may damage the device, confirm the positive and negative,
3. Strictly operate in accordance with electrical parameters, higher voltage will cause damage/degradation.
4. Avoid touching the LED with bare hands. Use anti static gloves or finger cots when handling LEDs.
5. Working surface should be clean, and well grounded. Include proper anti static protection.
6. Optical Hazard Risk: Avoid exposure to skin and eyes.
7. Heat Sink Required: Use a 1.6mm thick 20 mm² copper based heat sink or better.
8. Power supply is not included.

Storage: LEDs should be kept at 10 to 50 °C and 30 to 65% RH (Relative Humidity). Hermetic sealing is recommended, reseal after opening to prevent oxidation.