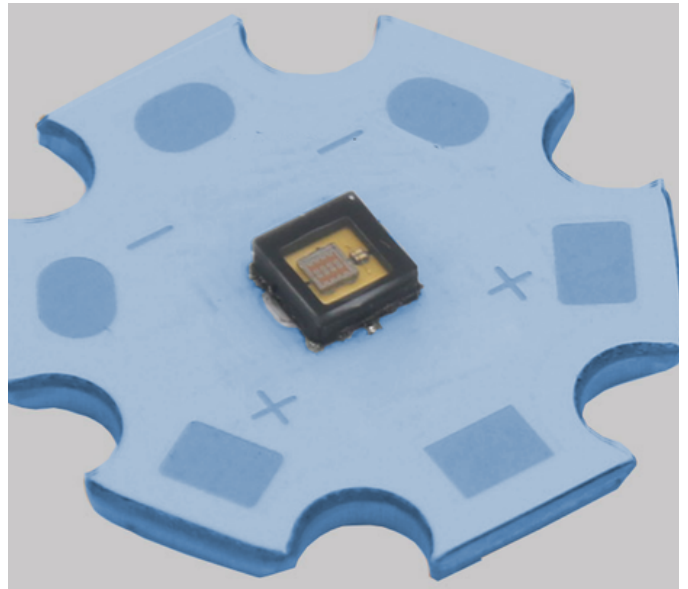
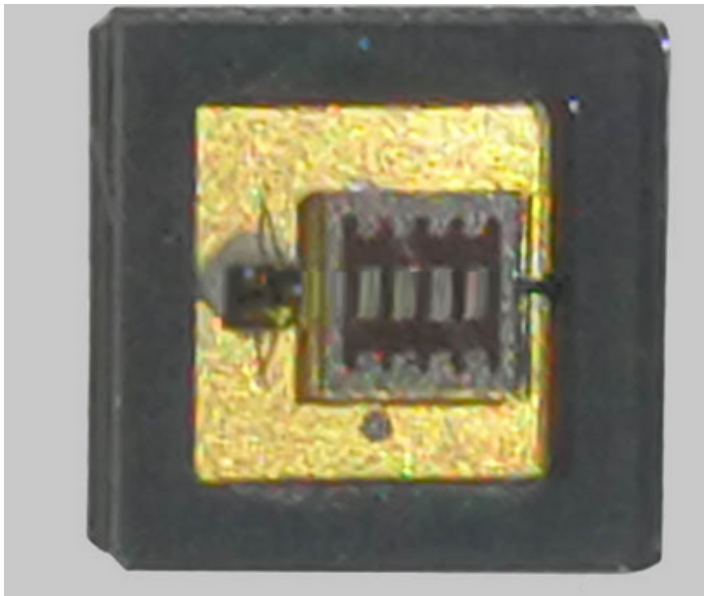
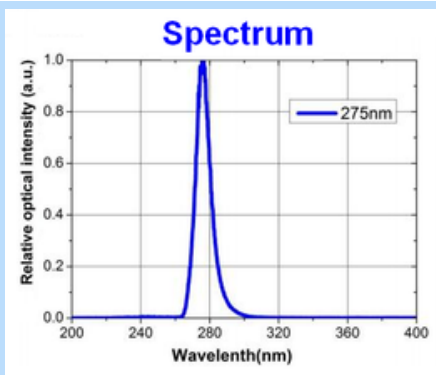


E275-10 UVC LED



SPECIFICATIONS

- **Options:** **E275-10** (LED only) , **E275-10-S** (soldered to star board)
- **Package:** 3535
- **Peak Wavelength:** 270-280 nm
- **Radiant Flux:** 10-18 mW
- **Forward Voltage:** 6.0-7.0 V
- **Spectrum Half Width:** 10-12 nm
- **View Angle:** 130
- **Optical Output Power Grade at 7V:** 100mA -8mW, 160mA-16 mW, 180mA-18mW Constant Current
- **Rating:** T=25°C, IF=100mA
- **Life Hours:** 10,000



Distance from detector [mm]	Irradiance [W/cm ²]
25	3.66E-04
50	9.46E-05
100	2.46E-05
200	6.19E-06
500	1.02E-06

NOTES FOR UVC-LED 275NM

- A.)** Do not touch the LED, contact will deposit oils that effect the normal operation/life.
- B.)** Power: Reversing polarity may damage the device, confirm the positive and negative,
- C.)** Strictly operate in accordance with electrical parameters, higher voltage will cause damage/degradation.
- D.)** Optical Hazard Risk: Avoid exposure to skin and eyes.
- E.)** Heat Sink Required: Use a 1.6 thick 20 mm copper based heat sink or better.
- F.)** Power supply is not included